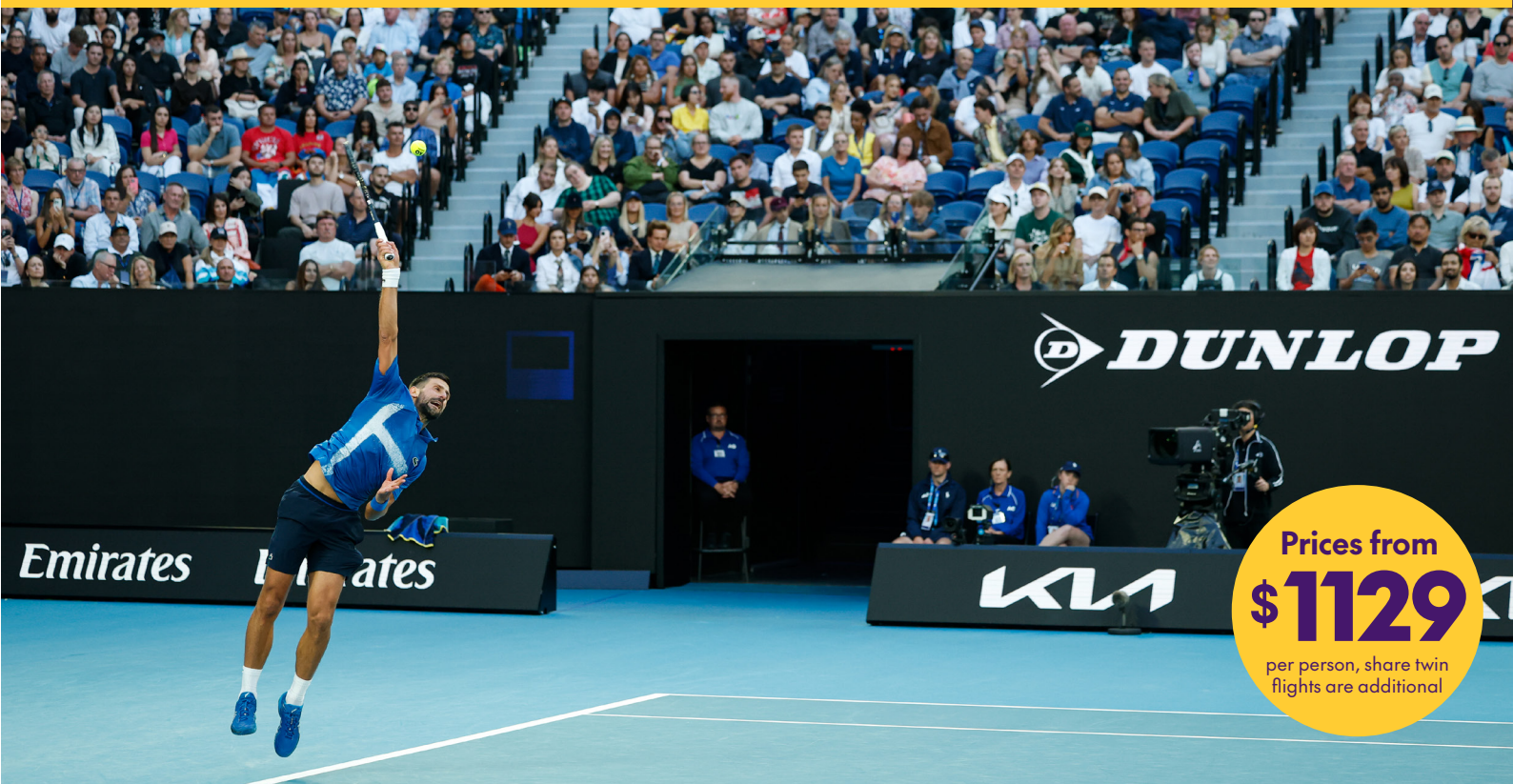


AUSTRALIAN OPEN 2026

18 January – 1 February 2026



Prices from
\$1129
per person, share twin
flights are additional

Be a part of all the action when the world's best tennis stars descend onto Melbourne Park for the first Grand Slam of the year. Just a short jump across the ditch to watch these incredible athletes hit it out over two weeks to gain the Australian Open title. A bucket list event that should not be missed.

SERVE & VOLLEY PACKAGE

These packages are 3 x nights accommodation and include a day and night session at Rod Laver Arena. The perfect package to experience the games in this arena.

(Upper Baseline Seating)

GAME, SET, MATCH PACKAGE

This package is 5 x nights accommodation and includes tickets to the Semi-Finals and Final sessions at Rod Laver Arena. This is the ultimate package to see the final 5 games. (Upper Baseline Seating)

THE BREAK PACKAGE

These packages are 4 x nights accommodation of choice and includes a mix of Rod Laver Arena, Margaret Court Arena, and ground passes. A perfect package to experience all Melbourne Park as to offer.

(Upper Baseline seating at Rod Laver and Upper seating at Margaret Court)



OFFICIAL TRAVEL
AGENT

HOT EVENTS

HOUSE OF TRAVEL

OUR PACKAGES

SERVE & VOLLEY PACKAGE:

These packages are 3 x nights accommodation and include a day and night session at Rod Laver Arena. The perfect package to experience the games in this arena. (Upper Baseline Seating)

3 nights accommodation 17 –20 Jan 26: 1 x day session Sunday 18 January & 1 x night session Monday 19 January to the First round of the Australian Open at Rod Laver Arena

3 nights accommodation 18 –21 Jan 26: 1 x day session Monday 19 January & 1 x night session Tuesday 20 January to the First round of the Australian Open at Rod Laver Arena

3 nights accommodation 20-23 Jan 26: 1 x day session Wednesday 21 January & 1 x night session Thursday 22 January to the Second round of the Australian Open at Rod Laver Arena

3 nights accommodation 22-25 Jan 26: 1 x day session Friday 23 January & 1 x night session Saturday 24 January to the Third round of the Australian Open at Rod Laver Arena

3 nights accommodation 24-27 Jan 26: Rod Laver Arena, 1 x day session Sunday 25 January & 1 x night session Monday 26 January to the Fourth round of the Australian Open at Rod Laver Arena

3 nights accommodation 26-29 Jan 26: 1 x day session & 1 x night session Tuesday 27 January & 1 x day session & 1 x night session Wednesday 28 January to the Quarterfinals of the Australian Open at Rod Laver Arena

3 nights accommodation 28-31 Jan 26: 1x twilight Women's Semi-Finals session & 1x Mixed Double Final Thursday 29 January & 1 day session & 1 x night session Friday 30 January to the Men's Semi-Finals of the Australian Open at Rod Laver Arena

3 nights accommodation 30 Jan-02 Feb 26: 1 x twilight Women's Final & Men's Doubles Final Saturday 31 January & 1 x twilight Men's Final & Women's Double Final Sunday 01 February to the Australian Open at Rod Laver Arena

GAME, SET, MATCH PACKAGE:

This package is 5 x nights accommodation and includes tickets to the Semi-Finals and Final sessions at Rod Laver Arena. This is the ultimate package to see the final 5 games. (Upper Baseline Seating)

5 nights accommodation 29 Jan-02 Feb 26: 1 x twilight session to Women's Semi-Final's & Mixed Double Final on Thursday 29 January, 1 day & 1 x night session to the Men's Semi-Final on Friday 30 January, 1 x night session Women's Final & Men's Double Final on Saturday 31 January & 1 x night session Men's Final & Women's Doubles Final on Sunday 01 February to the Australian Open at Rod Laver Arena

THE BREAK PACKAGE:

These packages are 4 x nights accommodation of choice and includes a mix of Rod Laver Arena, Margaret Court Arena, and ground passes. A perfect package to experience all Melbourne Park as to offer. (Upper Baseline seating at Rod Laver and Upper seating at Margaret Court)

4 nights accommodation 18-22 Jan 26 Includes: 1 x night Session Sunday 18 January at Rod Laver Arena, 1 x day Session Monday 19 January at Margaret Court Arena, 1 x All Day ground pass & 1 x night Session Tuesday 20 January at Rod Laver Arena, 1 x Day Session at Rod Laver Arena

4 nights accommodation 22-26 Jan 26 Includes: 1 x night session Thursday 22 January at Rod Laver Arena, 1 x All Day ground pass & 1 x night session Friday 23 January at Margaret Court Arena, 1 x day session Saturday 24 January at Rod Laver Arena, 1 x day session Sunday 25 January at Rod Laver Arena

OUR PACKAGES

PACKAGES	SERVE & VOLLEY	SERVE & VOLLEY	SERVE & VOLLEY	SERVE & VOLLEY	SERVE & VOLLEY	SERVE & VOLLEY	SERVE & VOLLEY	SERVE & VOLLEY	GAME SET MATCH	TIE BREAK	TIE BREAK
AUSTRALIAN OPEN SESSIONS	1st Round Days 1 & 2 18 & 19 Jan	1st Round Days 2 & 3 19 & 20 Jan	2nd Round Days 4 & 5 21 & 22 Jan	3rd Round Days 6 & 7 23 & 24 Jan	4th Round Days 8 & 9 25 & 26 Jan	1/4 Finals Days 10 & 11 27 & 28 Jan	Semi Finals Days 12 & 13 29 & 30 Jan	Finals Days 14 & 15 31 & 01 Feb	Semi Finals & Finals Days 16 & 17 29 & 01 Feb	Mix Rounds Days 1,2 & 3 18-20 Feb	Mix Rounds Days 5,6,7,8 22 - 25 Jan
CAUSEWAY 353											
DELUXE TWIN	\$1129	\$1179	\$1269	\$1519	\$1649	\$2939	\$3629	\$3859	\$7249	\$1929	\$2559
DELUXE SINGLE	\$1649	\$1769	\$1859	\$2119	\$2239	\$3529	\$4219	\$4449	\$8229	\$2719	\$3349
ADINA APARTMENT HOTEL MELBOURNE											
1 BEDROOM TWIN	\$1199	\$1219	\$1179	\$1559	\$1699	\$2989	\$3669	\$3899	\$7309	\$1979	\$2619
1 BEDROOM SINGLE	\$1779	\$1849	\$1669	\$2189	\$2319	\$3609	\$4299	\$4529	\$8359	\$2819	\$3449
2 BEDROOM TRIPLE	\$1369	\$1399	\$1489	\$1719	\$1859	\$3149	\$3839	\$4079	\$7599	\$2199	\$2839
2 BEDROOM QUAD	\$1179	\$1219	\$1289	\$1519	\$1659	\$2949	\$3639	\$3869	\$7269	\$1939	\$2579
CROWNE PLAZA HOTEL MELBOURNE - breakfast daily											
RIVERVIEW TWIN	\$1319	\$1299	\$1399	\$1629	\$1759	\$3059	\$3749	\$3979	\$7439	\$2079	\$2709
RIVERVIEW SINGLE	\$2019	\$1989	\$2089	\$2329	\$2469	\$3759	\$4449	\$4679	\$8609	\$3019	\$3649
RYDGES MELBOURNE											
RYDGES TWIN	\$1399	\$1379	\$1469	\$1709	\$1849	\$3139	\$3829	\$4059	\$7579	\$2199	\$2819
RYDGES SINGLE	\$2189	\$2159	\$2259	\$2499	\$2639	\$3929	\$4619	\$4849	\$8889	\$3249	\$3879



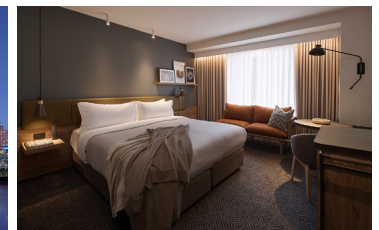
Causeway 353



Adina Apartment Hotel Melbourne



Crowne Plaza Hotel Melbourne



Rydges Melbourne

CONDITIONS: Valid until 03 Nov 25 • Prices are correct as at 01 Mar 25 • Prices are thereafter subject to change without notice until time of confirmation. Prices may vary due to a number of factors including tax and surcharge increases, exchange rate movements and availability. • A non-refundable deposit FROM \$500 per person is due at the time of booking. NOTE: Deposit is dependent on what sessions are purchased • Full payment is required no later than 03 November 25 • Once fully paid packages will be 100% non-refundable. • All travel must be commenced and completed as specified • Min/max stays apply of 3 x nights • Twin share is based on 2 adults sharing a room, bedding configurations may vary • Advertised prices are per person based on payment by cash or cheque. Credit card fees will apply • Amendment and cancellation fees apply • Accommodation ratings are based on House of Travel ratings and are a guide only to the overall quality of the property • Packages are subject to availability • Please ask your House of Travel consultant for full details. HOT Code: EVTMELOA026